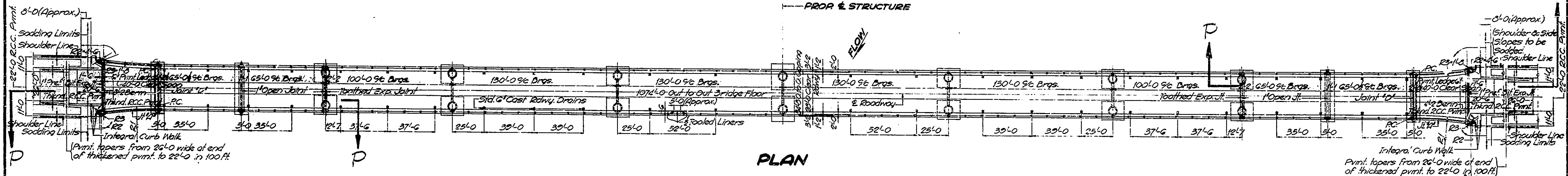
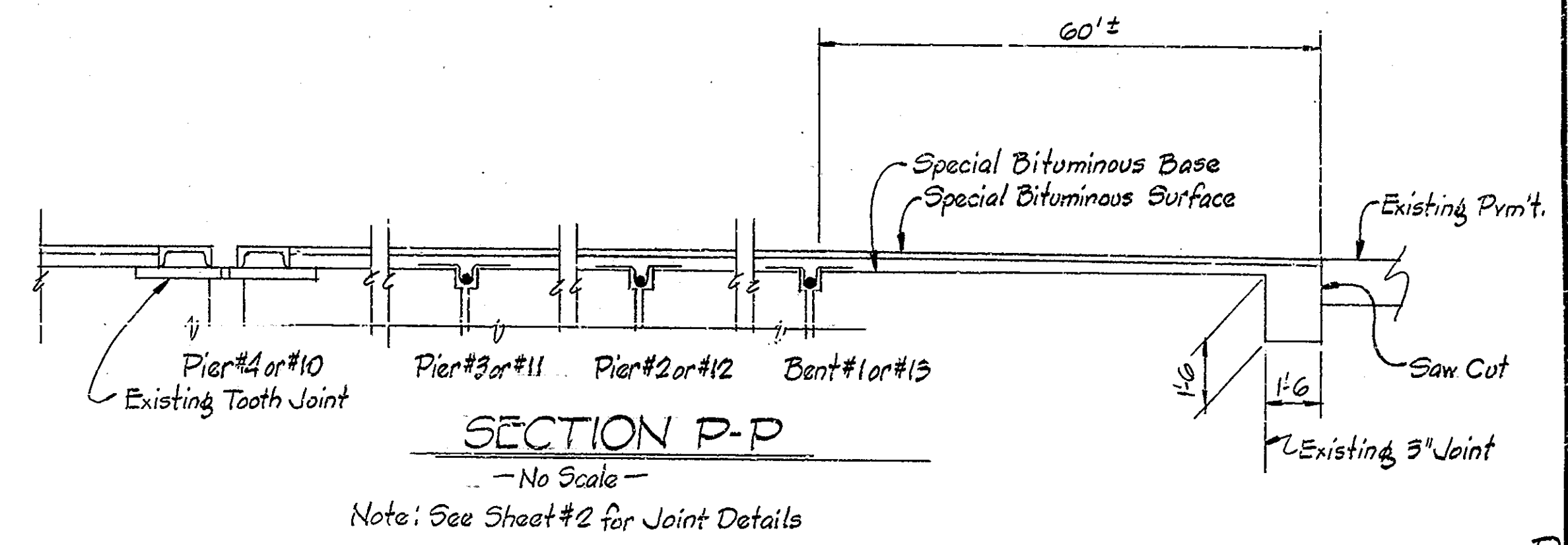
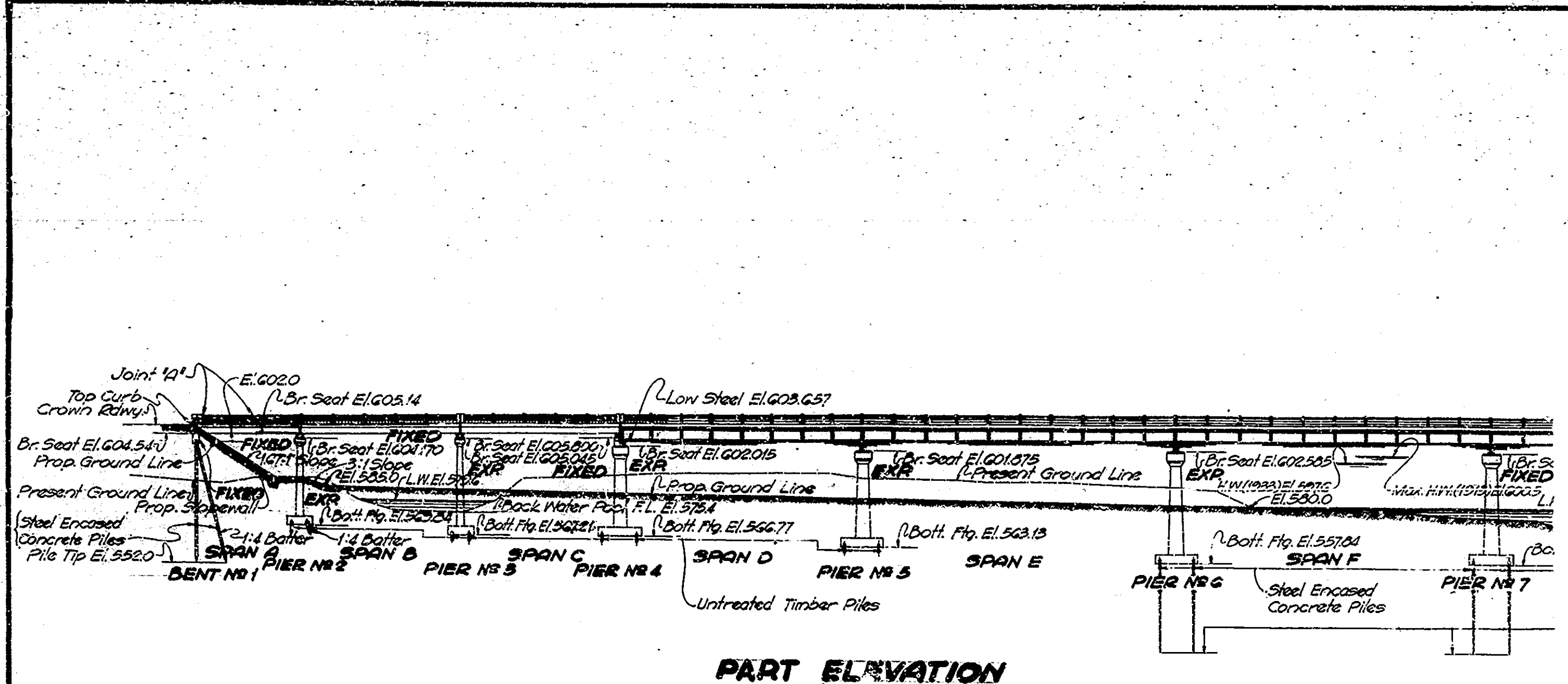
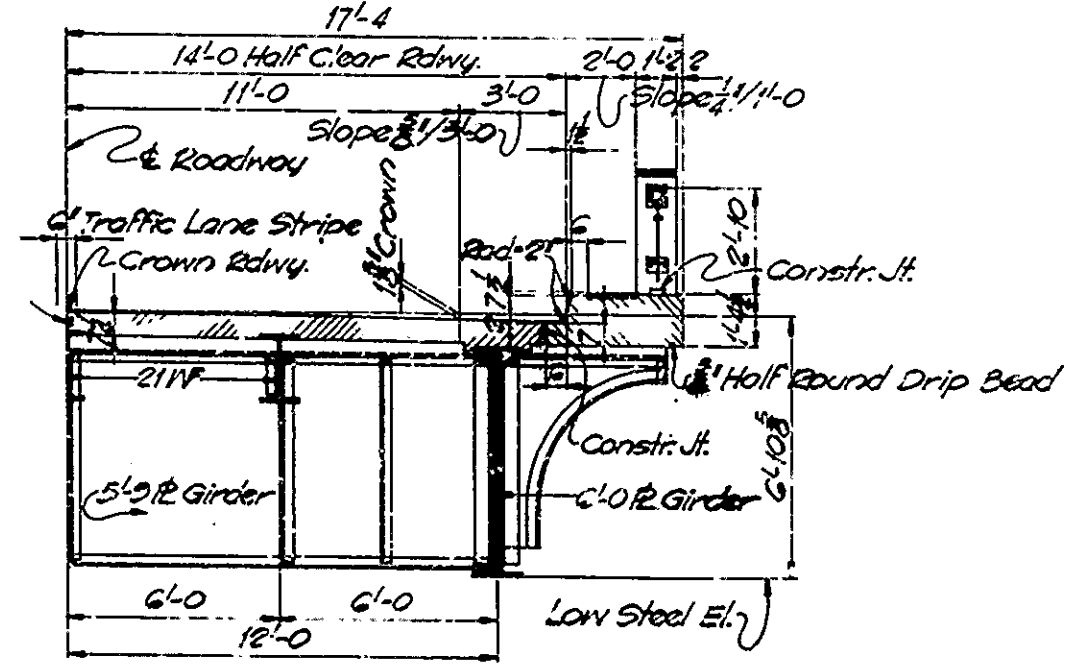


PUB. DATE	STATE	PROJECT NO.	FISCAL YEAR	SHEET NO.	TOTAL SHEETS
4	IND.	1872	1	6	



Sheet No.	Sheet Designation	Structure	Type	12 Spans	Over	Cont. No.
1	D1	39-55-3108A	Cont. Plate Girder, 5'8\"/>			
2	D2	Title Sheet & General Plan, Reconstruction & Overlay Details and Summary				
3	Det. Sheet 1	Detour Signs	A-12 April '72			
4	Det. Sheet 2	Barricades	B-14 April '72			
5	Det. Sheet 3	Detour Signs	A-17 April '72			
6	Det. Sheet 4	Detour Signs	A-18 April '72			

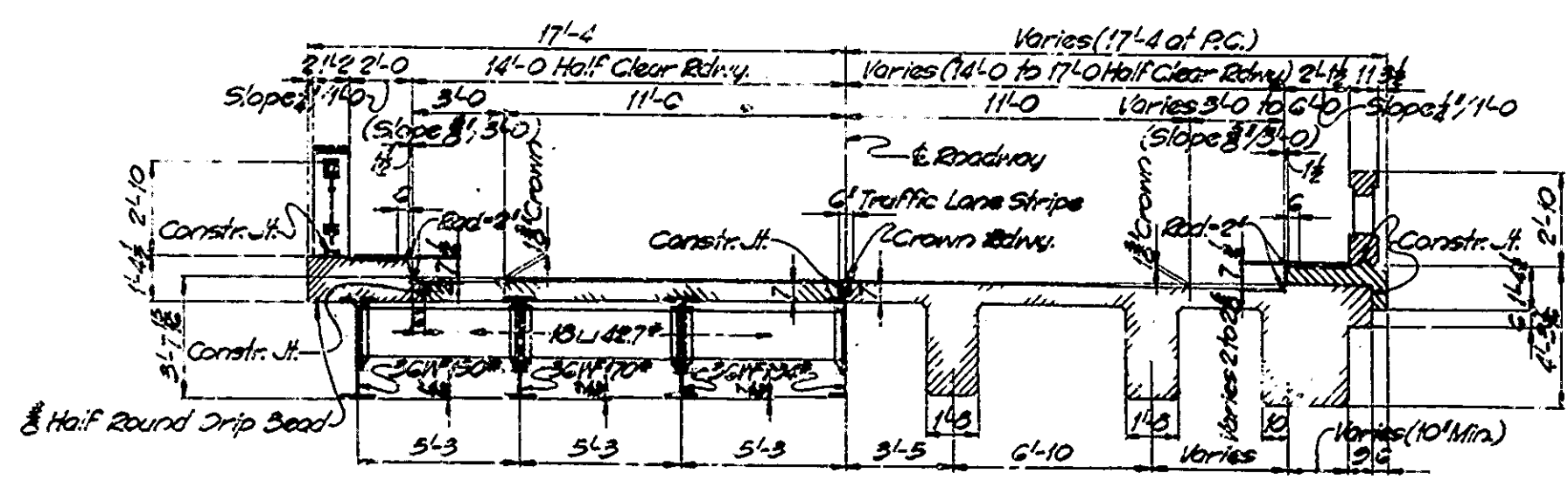


STANDARD	PURPOSE
Def. Sh. 1	Detour Signs
Def. Sh. 2	Barricades
Def. Sh. 3	Detour Signs
Def. Sh. 4	Detour Signs

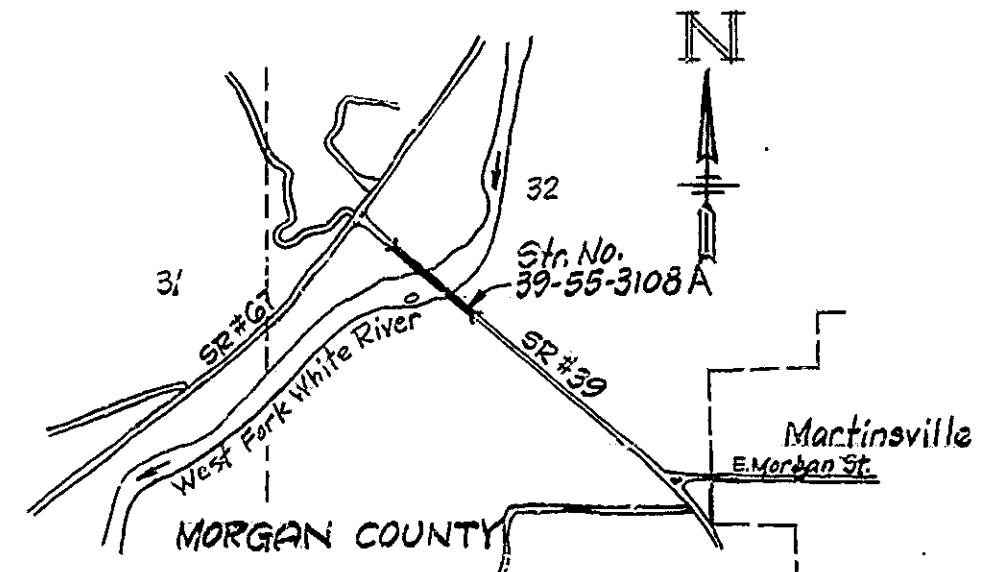
Plans for this structure are on file in the Central Office as Bridge File 39-A-3108 and are available on request.

Where new work is to be fitted to old work the contractor shall check all dimensions and conditions in the field and report any errors or discrepancies to the Engineer or assume responsibility for their correctness and the fit of the new part to the old.

INDIANA STATE HIGHWAY COMMISSION  
STANDARD SPECIFICATIONS DATED 1971  
TO BE USED WITH THESE PLANS



HALF SECTION SPANS B, C, K, & L  
Scale: 1/4"=1'-0"



SITUATION PLAN  
Scale: 1"=2000'

Rev. 8-4-72 Sheet 4, 5, 6 Deleted

APPROVED  
6-27-1972  
N.W. [Signature]  
CHIEF HIGHWAY ENGINEER  
INDIANA STATE HIGHWAY COMMISSION

TITLE SHEET AND GENERAL PLAN  
DECK RECONSTRUCTION & OVERLAY  
CONTINUOUS STEEL PLATE GIRDER,  
STEEL BEAM & R.C. GIRDER BRIDGE  
12 SPANS - 40'-0, 2x65'-0, 100'-0, 4x130'-0, 100'-0, 2x65'-0, 40'-0  
28'-0 ROADWAY 2, 2'-0 WALKS  
OVER WEST FORK OF WHITE RIVER ON STATE ROAD 39A  
STATE HIGHWAY COMMISSION OF INDIANA  
MORGAN COUNTY

SCALE As Noted  
RECOMMENDED FOR APPROVAL: [Signature]  
JUNE 26, 1972

PROJECT: DRAWING: D1 OF 2  
BRIDGE CONTRACT NO. B-0128  
STATION: 11+25.00  
BRIDGE FILE: 39-55-3108A



BRIDGES OVER 20' SPAN				
PUB. ROAD DIST. NO.	STATE	PROJECT NO.	FISCAL YEAR	TOTAL SHEETS
4	IND.		1972	2

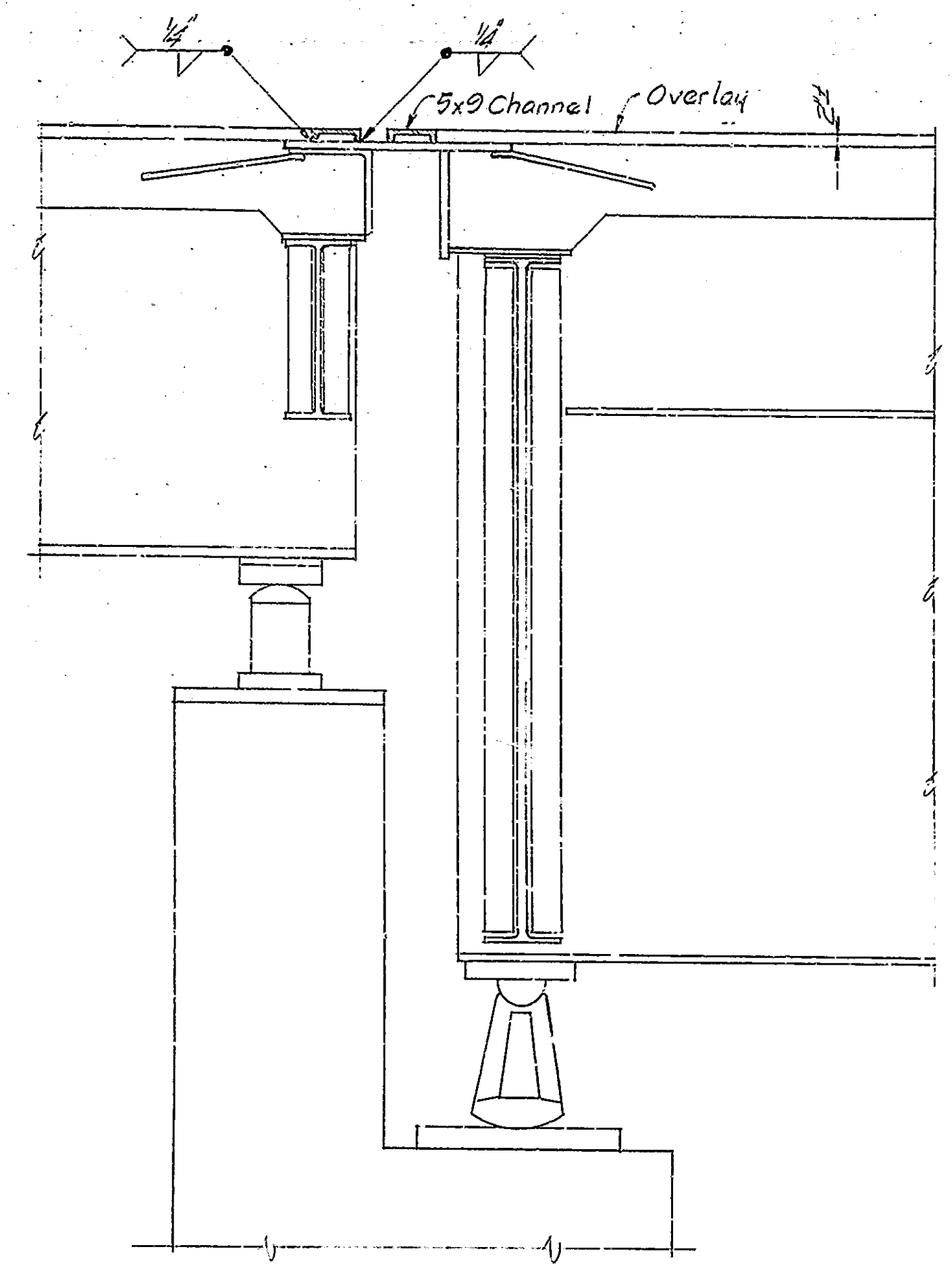
SUMMARY		
DESCRIPTION	UNIT	QUANTITY
Reconstructed Expansion Joint	Lin. Ft.	56
Joint Preparation	Lin. Ft.	168
Surface Sealing	Sq. Ft.	36,785
Special Tack Coat	Tons	2.3
Special Bituminous Base	Tons	186.0
Special Bituminous Surface	Tons	90.9
Special Bituminous Base (Hand Applied)	Tons	5.3
Pavement Removal	Sq. Yds.	14
Construction Signs Type "A"	Each	12
Construction Signs Type "B"	Each	8
Standard Barricades Type III	Each	2

**CONSTRUCTION PROCEDURE**

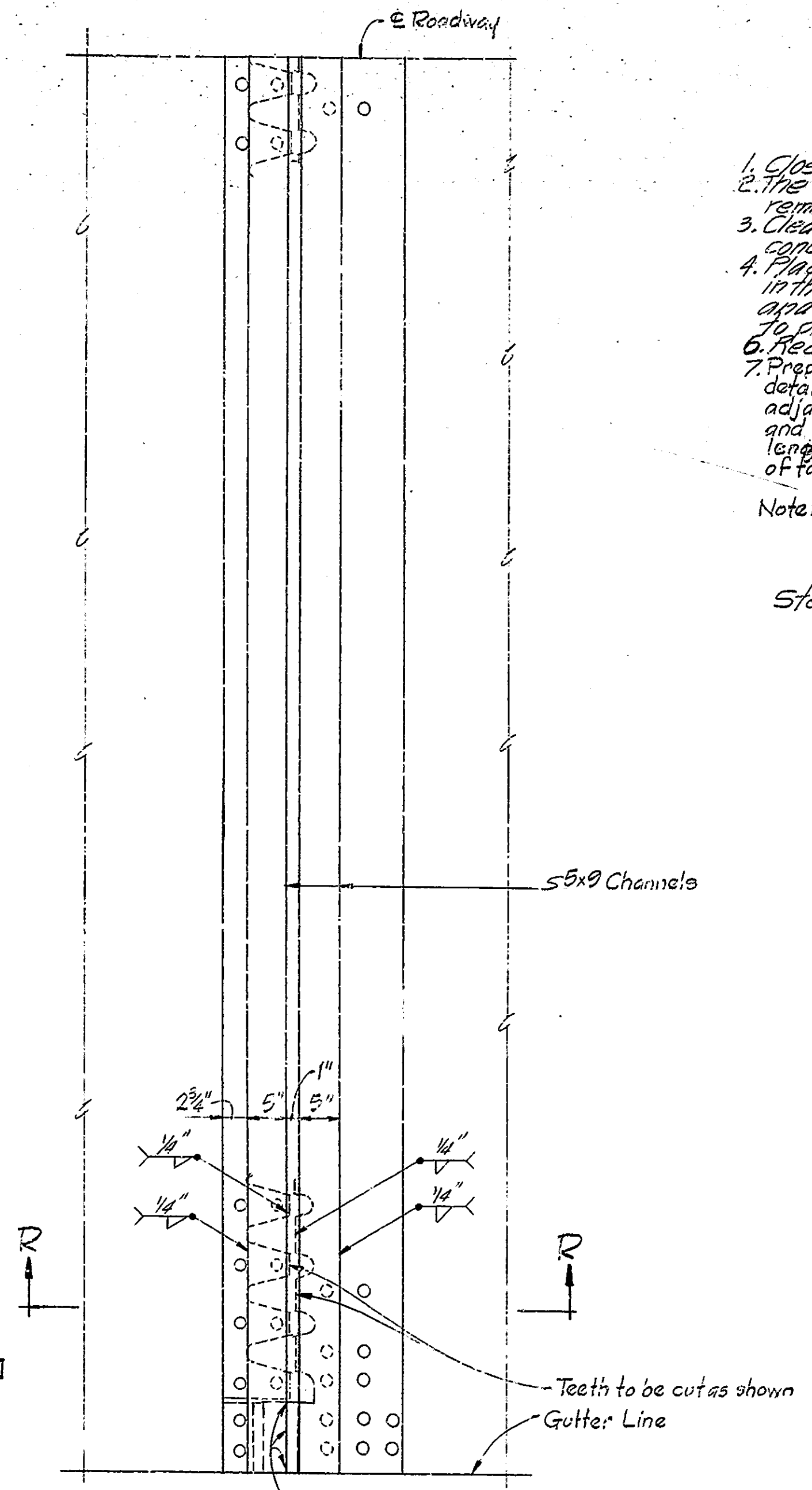
1. Close Structure to traffic.
2. The existing loose overlay and patching will be removed by District Forces.
3. Clean entire bridge floor, curbs, walks, and inside face of concrete railing and apply a penetrating epoxy sealer.
4. Place Special Bituminous Base up to top of existing overlay in the areas to be patched. 5. At joints at Bents 1 and 13 and at Piers 2, 3, 11 and 12 saw cut as shown on plans to provide for joints.
6. Reconstruct toothed expansion joints as shown on details.
7. Prepare joints at bents 1 and 13 and piers 2, 3, 11 and 12 as shown on details and apply a 3% liquid latex tack coat to bridge floor and adjacent areas of approach pavement. Place 3% liquid base course and special sand mix surface course. Taper base course in 60 ft. length from end of bridge floor. Build 18" wide joint at outer ends of tapers at location of the existing 3 inch joints.

Note: The numbers do not necessarily indicate the sequence of operations.

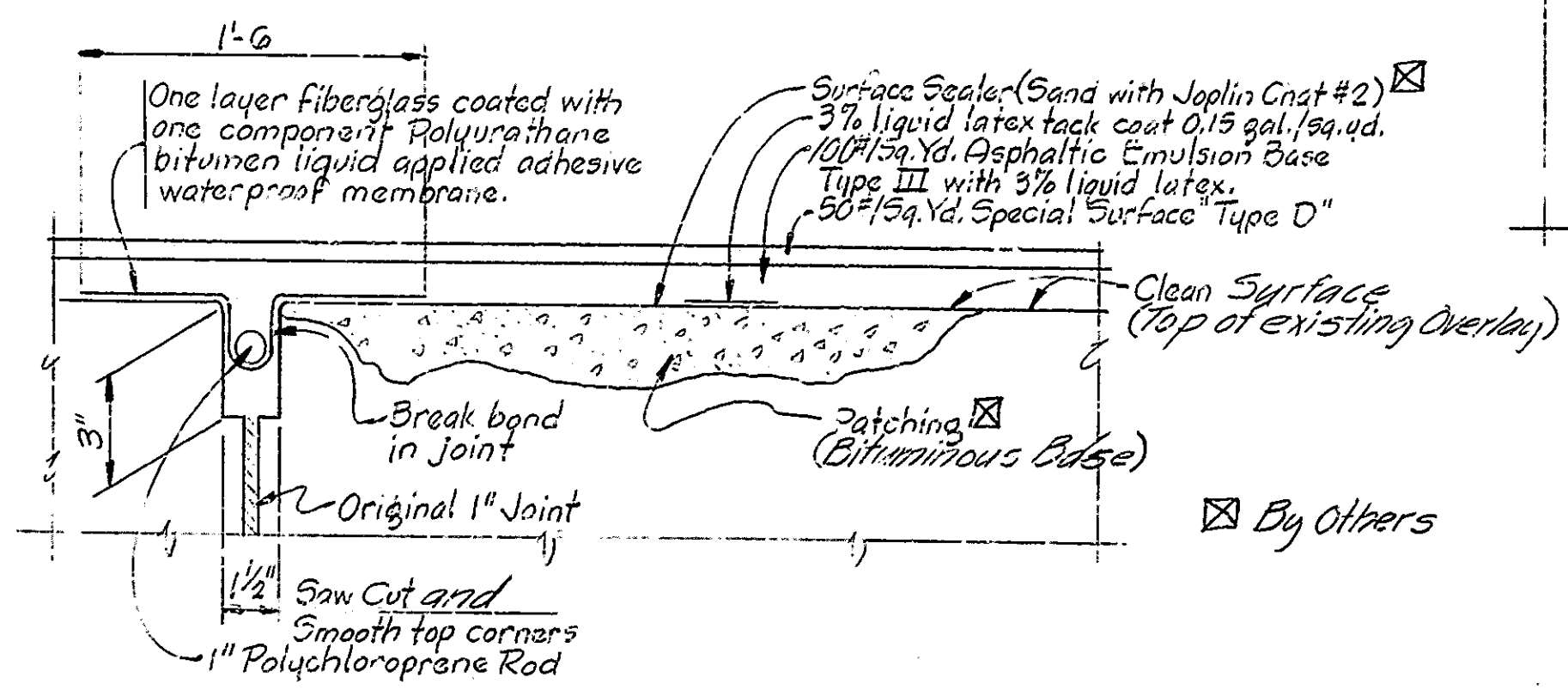
Steps 1, 2, 3 & 4 are to be done by District Forces.



SECTION R-R  
Scale: 1"=1'-0"



HALF PLAN  
Pier # 4 or #10  
Scale: 1"=1'-0"



JOINT DETAILS @ BENT #1 & #13, PIERS #2, #3, #11 & #12  
TYPICAL SURFACE TREATMENT

Note: Cost of fiberglass, polychloroprene rod, waterproof membrane and joint sawing are all included in the cost of Joint Preparation.  
Tack Coat is to be protected and repaired if required during application of base course.

DESIGNED BY	CYD
DRAWN BY	DA5 9/72
CHECKED BY	CYD

**DETAILS AND SUMMARY**

**INDIANA STATE HIGHWAY COMMISSION**

SCALE: As Noted DATE: JUNE 26, 1972

RECOMMENDED FOR APPROVAL: *E. W. Walker*

DRAWING: D2 OF 2 PROJECT: B-9128

BRIDGE FILE: 39-55-3108A

Rev. 8-4-72 Concrete Patching and Overlay removal removed.

